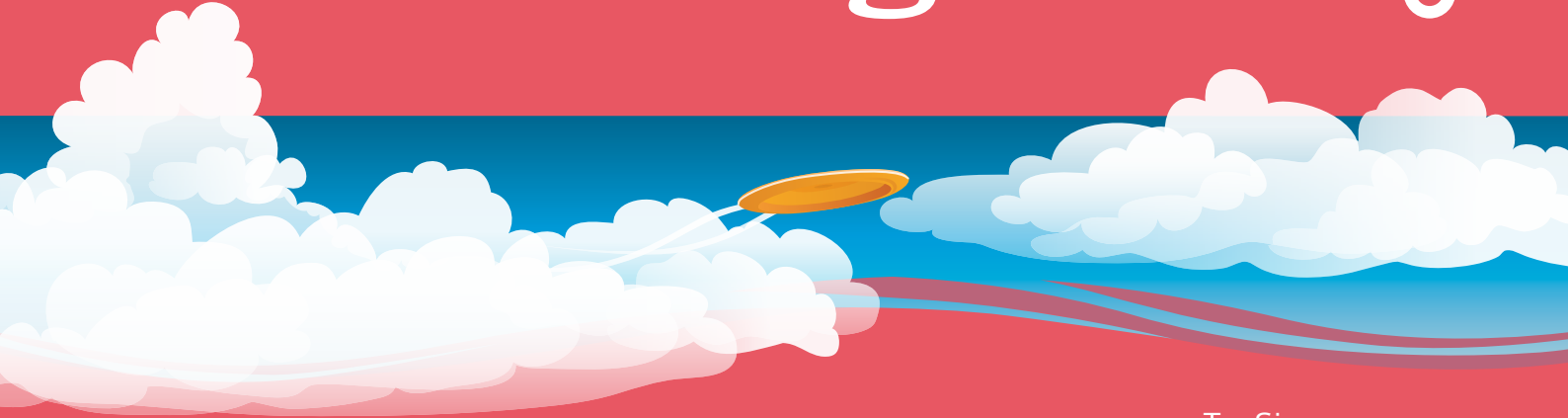


TeeSign

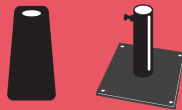


TeeSign Installation - Parts and Tools Needed

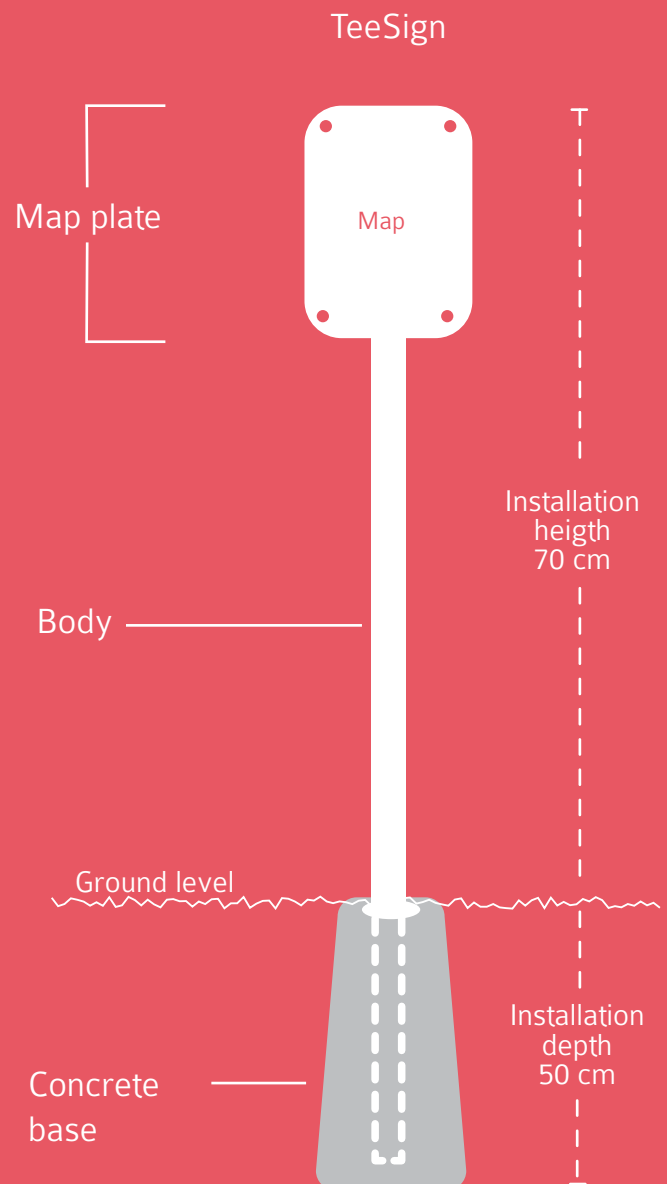
- Parts of the TeeSign (2): body and map plate (included in regular delivery)
- Bolts and nuts for attaching the map plate (included in regular delivery)
- Concrete base (or mold) and a plastic socket for tightening (not included in regular delivery)
- Optional rock base
- 8 mm wrench (not included in regular delivery)
- 3 mm hex key (not included in regular delivery)
- Power drill with a 4-5 mm bit
- Digging tools
- Gravel

Accessories

- Concrete base
- Rock base



Detailed installation instructions on the back side.



TeeSign



Installation Phases

1. Install the TeeSign far enough (at least 1,5 m) from the TeePad so that the players won't hurt their hand when throwing. The recommended installation location of the TeeSign is on the front right or left side of the TeePad. It can also be located directly on the right or left side of the TeePad.
2. Dig a hole that is 50 cm deep and 50 cm wide. Put the concrete base in the hole.
3. If you use a ready-made concrete base, put the TeeSign pole in it. If you cast the concrete yourself, put the pole in the cast.
4. Set the TeeSign pole straight. Attach the back plate to the pole with the 3 mm hex key. Direct the map part so that it can be clearly seen from the TeePad.
5. Attach the pole by pressing down the plastic socket around the pole. Fill the hole with coarse gravel and pack it tight.
6. Drill the ready-made map plate holes in the TeeSign clean to ensure tight fit. Attach the map plate on the back plate with the 3 mm hex key and the 8 mm wrench. (The maps are usually separately delivered after the course equipment.)



TeeSign Installation on Rock

- Rock base (to be ordered separately)
1. Find a flat and solid place for the rock base so that it can be attached from its every corner.
 2. Level the rock base using nuts for instance.
 3. You will need 10 mm bolts that are 80-100 mm in length.
 4. Tighten the bolts with a wrench.

